



## CORE FEATURES

- ▶ PC / Laptop interfaced Flashing Tool
- ▶ Online flashing mode
- ▶ Multiple Protocols & Automatic Protocol selection
- ▶ Inbuilt Power supply, no external charging required
- ▶ Complete diagnostic solutions enabled
- ▶ DTC's with Cause & Remedial action
- ▶ Adjust required parameters
- ▶ 2D / 3D Scanner Configuration supported
- ▶ Database Management System (DBMS) enabled
- ▶ Online firmware update
- ▶ VCI connect to Laptop / Tablet via USB / Bluetooth

# BRIO SCANNER

- Size W x H x D - 90 x 130 x 40 mm.
- Weight - 280 Gram (Approx)
- Body Color - Orange & Grey
- PC Sync - USB Port (3.0)
- Version - 12.0.1
- Language - English
- Product Type - Compact
- User Manual

## SOFTWARE FEATURES

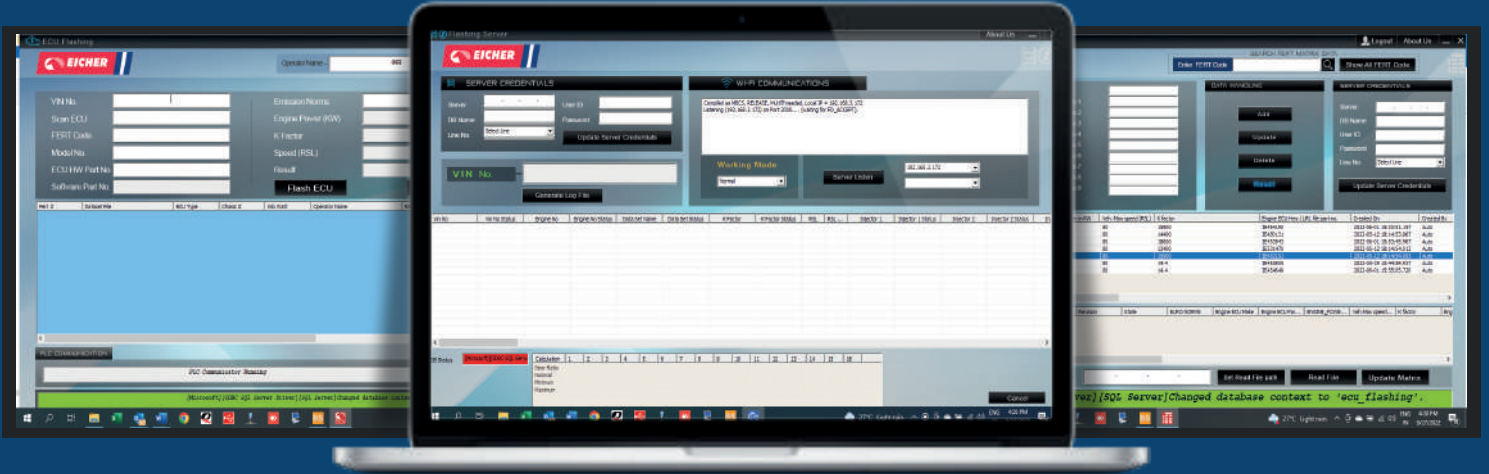
- ▶ Software Selectable options for ECU's
- ▶ Online update of Firmware
- ▶ Automatic Protocol (CAN / KWP) Selection
- ▶ ECU Dataset flashing
- ▶ Vehicle Diagnostics – Actual Parameter, DTC's, Adjust parameters, Test Actuators, Freeze frame.
- ▶ VIN Writing & Reading option enabled
- ▶ 2D / 3D Scanner integration
- ▶ Barcode & Label Printer integration
- ▶ Multiple ECU variants can be merged in the same VCI
- ▶ Runtime Data logging
- ▶ Online Server Integration

## HARDWARE FEATURES

- ▶ Laptop / Tablet based Diagnostics Tool
- ▶ External Communication via K – Line / CAN
- ▶ CAN Communication via J1939 Protocol / UDS
- ▶ Power supply range 08 Volt – 32 Volt
- ▶ 32 Bit, 120 MHz ARM Cortex Series Processor
- ▶ Memory 4GB inbuilt
- ▶ Expandable memory upto 32GB
- ▶ In built 09 volt Power Supply
- ▶ J1962M to DB9F, OBD II Cable
- ▶ Uploading the data to PC via USB 3.0
- ▶ EMI/ EMC protection enabled

# TECHNICAL SPECIFICATION

Sl. No.	Input Description	VCI Hardware Specification
1	Nominal Voltage	3.3 V DC
2	Operating Voltage	8V TO 32V DC
3	Test voltage	24.5V±0.5V DC
4	Storage temperature	- 40°C to +95°C
5	Operating temperatur	- 30°C to +85°C
6	Standby Currente	≤0.1mA
7	Total Current (all features ON)	<150 mAmp
8	Reverse polarity protection	≤0.1mA24V for 2 min. As per, ISO16750-2:2010 CL.4.7
9	Over Voltage protection	Method A : 18V for 5 hours Method B : 24V for 5 Hours as per, ISO16750-2:2010 CL.4.3
10	Transient protection	ISO 7637 (until pulse-5a) ( protection with TVS diode supported )
11	Short circuit protection	Short to ground for 1 min @32 v
12	EMI/EMC	AIS 004(Part 3), ECE R10 rev 05
13	Protocol Support : K-Line & CAN Line	ISO 11898, ISO 16845, ISO 15765, ISO14229, ISO 9141-2, ISO 15031, SAE J1979, SAE J2012-DA, SAE J1939, ISO 27145-3,4, SAE J2534.  CAN baud rate = 500 kbps & 250 kbps
14	Protocol Support : K-line	ISO 14230, KWP 2000 (FAST & 5-Baud)
15	Vibration	10G-15 Hz to 500 Hz, 20 hrs in each direction
16	Shock vibration	20 G (3 shock at 6 directions). Pulse: Sawtooth
17	ESD	Test Standard : ISO 10605(Edition 2.0)(2008-07) Contact Discharge : +-18Kv Air Discharge : +-18Kv Polarity : Positive & Negative
18	Insulation resistance	100MΩ or above @ 1000V DC for 1min between body and terminal
19	Battery less operation	Yes
20	Connectivity requirements	Bluetooth v4.2 BR/EDR and BLE specification Wifi
21	Memory	Internal Memory of 32MB
22	Hardware CAN Support	CAN & CAN FD Flexible Data-Rate-
23	Pass-Thru	J2534 Protocol
24	External Storage Memory	32GB
25	ESD Protection on CAN H & CAN L	IEC61000-4-2 up to ±13kV



### PACKAGE CONTAINS

- BRIO Scanner. (Flashing Tool)
- J1962M to DB9F, OBD II Cable
- USB Cable 3.0
- Bluetooth Dongle
- Barcode Scanner (Optional)
- Label Printer (Optional)
- User's Manual
- Carrying Pouch

### FEATURE REQUIREMENTS \*

Sl.No.	Features	Details	Remarks from Pragathi Solutions
1	Security Management	Any communication between device and mobile or cloud should be encrypted	Ok
2	Mobile SDK / API	To integrate with existing mobile application	SDK support required
3	Platform APIs /Microservices	To host the APIs / Microservices on Cloud services	Ok
4	Capture Vehicle ECU data	The Device should read all the Vehicle Parameters, DTC error codes and MIL codes	All ECU related data we will support
5	Actuators	Request and response the specific vehicle parameters,DTC error codes and MIL codes	All ECU related data we will support
6	Update Configure values	The Device should interface to update the config values in ECU	Yes
7	Update ECU firmware	Update the ECU firmware software	Online update via Bluetooth/Wifi
8	Flash ECU	Flash ECU firmware software	Yes